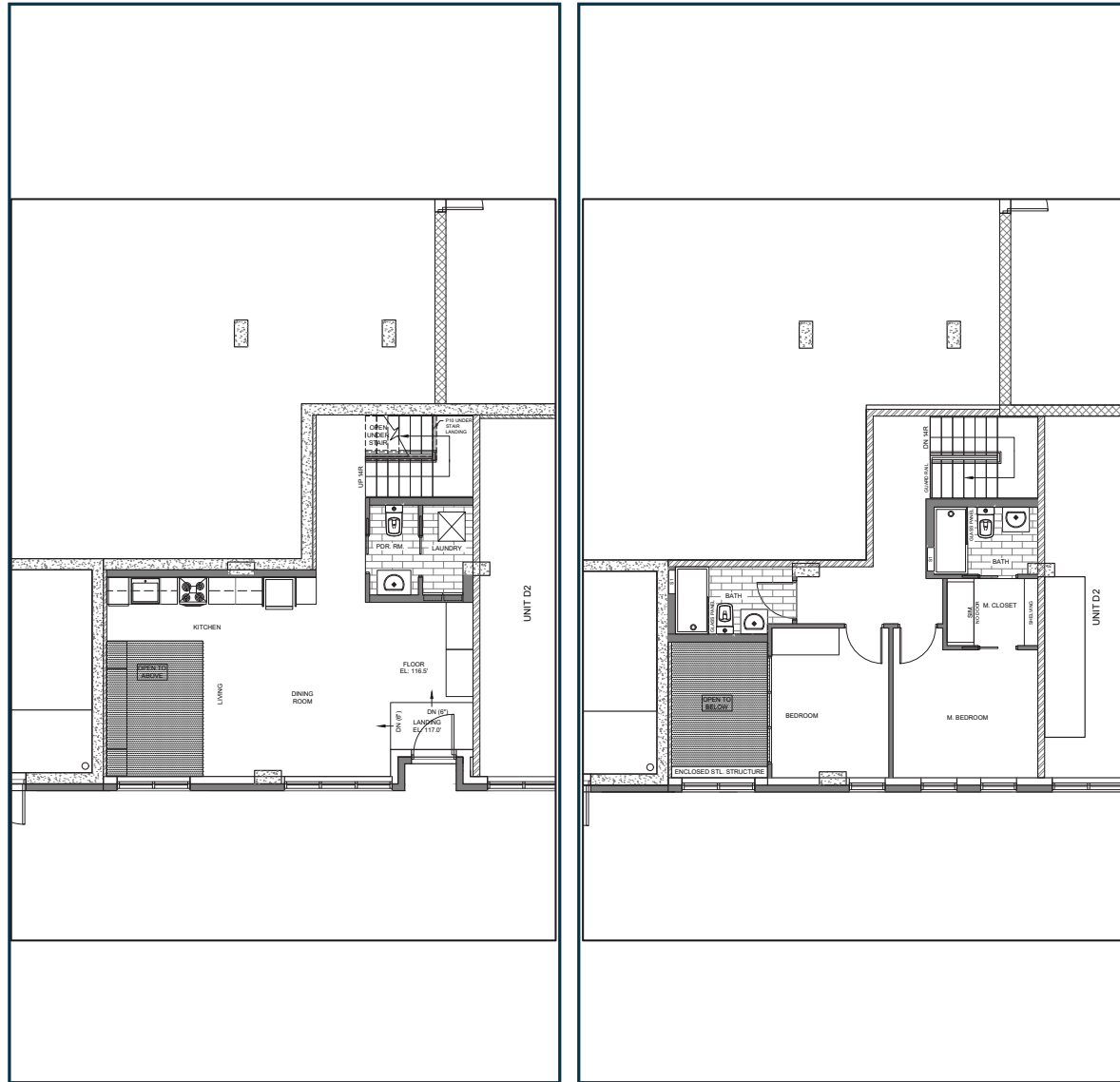


GRAFTON PARK



MAIN LEVEL

UPPER LEVEL

UNIT D1

 LIVING AREA: **985** SQ. FT

 **X2**
BEDROOM

 **X2**
FULL BATHROOM

- 2 level units with open concept
- Open floor area with view to lower level
- Individually controlled air Conditioning/heating units
- High-end finishes include granite counters, stainless appliances, luxury vinyl flooring & designer tile
- Washer/Dryer (stacked)
- South facing views

\$2,300 MONTHLY

(minimum 1 year lease)
Electricity, heat, cold & hot water
are in addition to rent.
Sub-metered & billed separately.

*Prices subject to change.